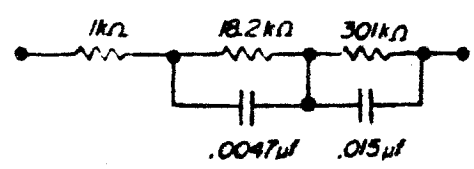


NSIO PHONO STAGE
 IDENTICAL EXCEPT
 * 220μF REPLACED BY 47μF
 * 47.5kΩ REPLACED BY 1kΩ
 * 18.2kΩ REPLACED BY 47.5kΩ
 NO RELAY
 * 4.75kΩ REPLACED BY
 EQUALIZATION CIRCUIT BELOW:



THRESHOLD NSIO

HIGH LEVEL PREAMPLIFIER STAGE